



Volume 17, numéro 1
printemps 2010
 Rédactrice: Valerie Shoffey

Volume 17, Number 1
spring 2010
 Editor: Valerie Shoffey

CHRONIQUE DU PRÉSIDENT

Les taux d'inscription aux études supérieures en géographie: Deux décennies d'évolution au Canada

C'est en 1966 que l'Association canadienne des géographes (ACG) a établi et a fait paraître son tout premier annuaire qui était connu à l'époque sous le nom *Bulletin de nouvelles*. Puis, en 1972, on le rebaptise *Bulletin de nouvelles et liste des membres*. Les premiers numéros rassemblent les mêmes types d'information que dans la version actuelle de l'*Annuaire* qui a été lancée en 1977.

On peut considérer l'annuaire comme une sorte de patrimoine collectif fortuit qui réunit des informations tangibles sur l'enseignement supérieur en géographie au Canada. Il est possible alors de retracer l'évolution du profil de chacun des départements et du personnel enseignant, d'où l'intérêt d'examiner les livraisons antérieures de l'annuaire. Il en ressort un portrait saisissant de l'évolution des domaines de recherche des professeurs et étudiants au cours de cette période de temps. C'est fascinant de constater à quel point nous sommes ralliés à la « révolution quantitative » qui s'est opérée en géographie mais a rapidement été remplacé par d'autres courants plus larges. L'Annuaire de l'ACG est un véritable livre d'histoire dont les traces ont été conservées par un petit groupe de personnes dévouées qui se sont chargées, année après année, de la rédaction et distribution de l'annuaire.

Une des particularités de l'annuaire est de présenter le tableau « Inscription aux départements de géographie » par année académique. Les données colligées et reprises dans le tableau sont le résultat d'un travail réalisé avec plaisir et dans lequel beaucoup d'efforts ont été consentis par les membres du personnel et des enseignants de nombreuses institutions et par le rédacteur en chef de l'annuaire. Le recensement annuel des étudiants inscrits dans les établissements d'enseignement supérieur est un outil précieux qui est sûrement la partie de l'Annuaire la plus consultée et appréciée par la plupart des lecteurs, sinon tous.

C'est par curiosité que j'ai entrepris de compiler l'ensemble des données contenues dans les annuaires publiés entre 1987 et 2009. Il faut reconnaître en toute page suivante...

PRESIDENT'S COLUMN

Post-Secondary Enrolment Trends in Geography: Two Decades of Change in Canada

In 1966 the Canadian Association of Geographers (CAG) collated and printed the first of a continuing series of annual directories. Initially referred to as a *Newsletter*, in 1972 the name was changed to *Newsletter and Membership List*. The content of these early volumes included listings similar to those recorded in the present *Directory* format that was adopted in 1977.

Although an unintended legacy, the directory provides a lengthening temporal perspective on post-secondary geography in Canada. A review of past issues illustrates the changing face of individual departments and their personnel rosters. Intriguingly, the directory also provides a census of the waxing and waning of the research interests of both faculty and students over the intervening years. It is enthralling, for instance, to watch as the “quantitative revolution” is at first embraced and then subsumed by wider research interests. There are many stories to be told from the records contained within the pages of the CAG Directory, with the credit for these opportunities clearly belonging to the small cadre of individuals who over the intervening years have annually shepherded the directory to the printers.

A continuing feature of the directory is the “Geography Department Program Enrolment” table that prominently appears each year. The data compiled in the table can only be described as a labour of love, as it represents the combined efforts of staff and faculty at numerous institutions and the cajoling efforts of the directory editor. This annual census of student enrolment in post-secondary geography programs is invaluable, and almost as certainly is one item that most readers of the Directory examine. continued...

IN THIS ISSUE	PAGE
Chronique du président / President's Column	1
Division News	6
student ZONE d'étudiant	8
Obituary	11
Job Opportunities in Geography	12

justice que les données ne sont pas totalement fiables. À certains moments, des départements ont omis de soumettre les informations relatives aux inscriptions. Pour combler cette lacune, une moyenne a été calculée à partir des valeurs de référence des années précédentes et suivantes. Au Québec, où il n'existe pas de division régionale de l'ACG, les données sur les universités francophones et anglophones sont réunies sur une même fiche. Malheureusement, les données obtenues pendant cette période des deux communautés linguistiques laissent beaucoup à désirer.

La figure 1 présente un aperçu de l'évolution de la répartition des étudiants par cycle universitaire à l'échelle nationale. C'est au tournant des années 1990 que le nombre d'étudiants inscrits dans un programme de formation en géographie était en forte croissance. Par contre, tout au long des années 1990 les inscriptions dans les programmes de premier et deuxième cycles ont subi un recul alors que le nombre de doctorants s'est maintenu jusqu'à la fin des années 1990 avant de chuter légèrement par la suite. Au cours de la dernière décennie cependant, le nombre d'étudiants inscrits dans l'un ou l'autre des programmes est en général en légère augmentation, malgré le phénomène curieux des phases de hausse et de baisse constatées chez les étudiants des premier et deuxième cycles (qui s'explique peut-être par le manque de cohérence des données provenant du Québec). La diminution graduelle dans le nombre d'étudiants inscrits au premier cycle se confirme en 2004-2005 et entraîne une tendance à la baisse des étudiants qui poursuivent des études de deuxième cycle en géographie quelques années

Out of curiosity I compiled the annual enrolment data recorded in the directory between 1987 to 2009. In fairness, it needs to be reported that the data is not without some problems. Occasional lapses by a few departments to supply enrolment data required that an average number from the year before and after a missing value be used to fill in some gaps. The data from Province of Quebec, where there is not an active CAG Division, includes data from both English-and French-Speaking institutions. Unfortunately, reporting by both groups of institutions has been spotty over the survey period.

Figure 1 provides a summary illustration of the national changes in enrolment at the undergraduate, masters and PhD levels. All levels show a period of rapid growth characterised late 1980s to early 1990s. Although enrolment numbers gradually declined through the remainder of the 1990s at both the undergraduate and master levels, the number of PhD candidates stabilized until the late 1990s when a period of modest decline was initiated. Over the last decade all levels show a progressive increase in the number of students enrolled; albeit with some curious growth and declines at the undergraduate and master's levels (that may well be related to inconsistencies in the reporting of data from Quebec). A general decline in the number of undergraduate students that began in 2004-2005 appears to be reflected shortly thereafter in the number of students enrolled in masters programs in geography. In contrast the total number of students enrolled in PhD programs continues to increase at the same pace following a resurgence of interest in 2001-2002.

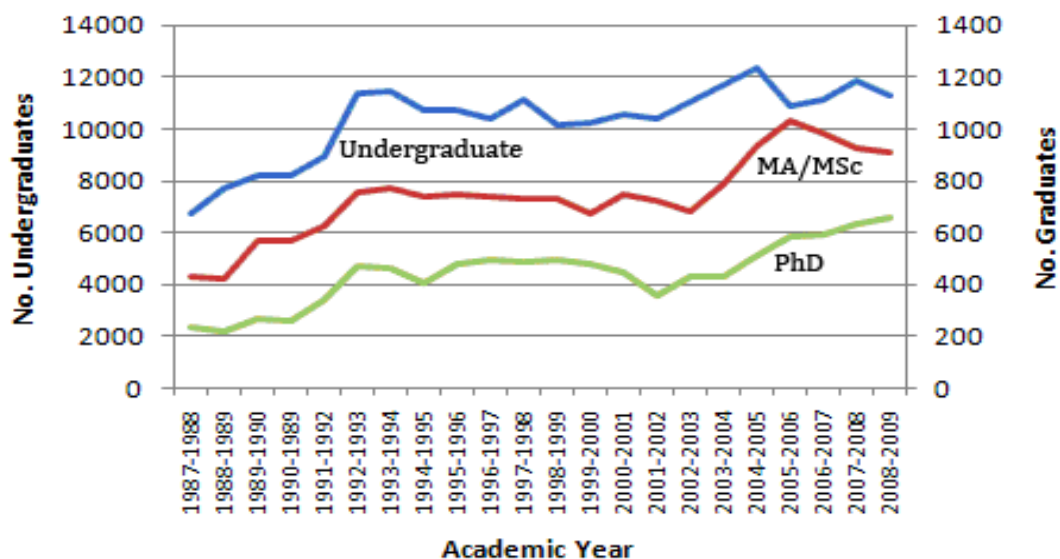


Figure 1. Student enrolment in Canadian post-secondary geography course/programs 1987 to 2009 as recorded in the Canadian Association of Geographers Directory./

Figure 1 : Évolution des effectifs des programmes d'études supérieures en géographie offerts au Canada, 1987-2009, données recensées dans l'Annuaire de l'Association canadienne des géographes

plus tard. En revanche, on observe un regain d'intérêt depuis 2001-2002 pour les études de troisième cycle, ce qui explique que le nombre de doctorants continue de progresser à un rythme soutenu.

La série de données sur les inscriptions présentées dans les annuaires rendent possible leur comparaison afin d'étudier les tendances dans les divisions. Un état des lieux du premier cycle est illustré par la figure 2. Les données disponibles sur le Québec

The enrolment data contained within the annual directories provides an opportunity to examine inter-divisional trends. Figure 2 illustrates the situation at the undergraduate level. The Quebec data as reported here are incomplete and no conclusions should be drawn. The distinct character of undergraduate education in Quebec is not directly comparable to that in the other CAG divisions.

Figure 2 shows that the largest proportion of

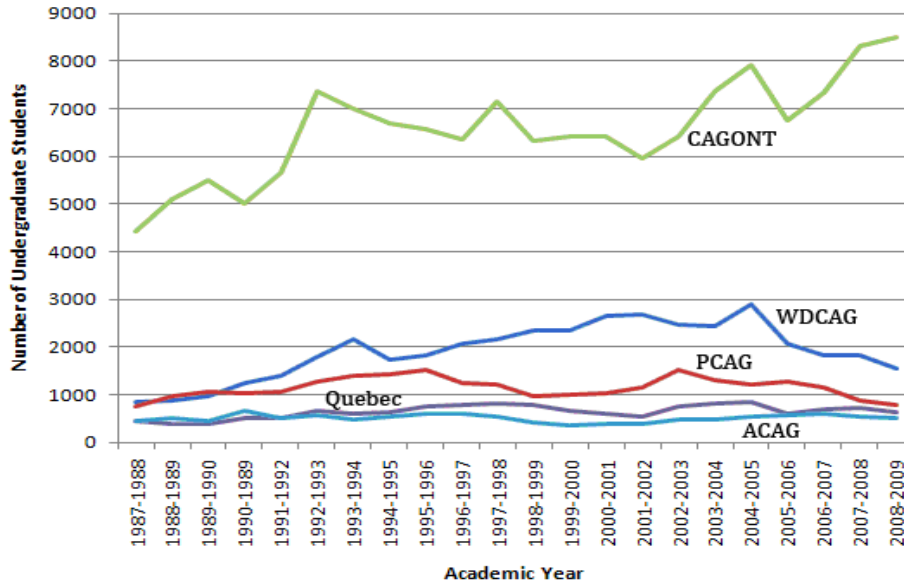


Figure 2. Student enrolment in post-secondary undergraduate geography course/programs by CAG Division, 1987 to 2009, as recorded in the Canadian Association of Geographers Directory./

Figure 2 : Évolution des effectifs des programmes d'études de premier cycle en géographie par Division de l'ACG, 1987-2009, données recensées dans l'Annuaire de l'Association canadienne des géographes.

sont imprécises et ne permettent pas de tirer aucune conclusion. Ajoutons que l'enseignement du premier cycle au Québec se distingue des autres divisions de l'ACG et, par conséquent, il serait hasardeux de les comparer.

La figure 2 montre que la proportion la plus forte d'étudiants du premier cycle en géographie se retrouve dans la division de l'Ontario. Cela n'a rien d'étonnant puisque l'Ontario compte un grand nombre d'établissements d'enseignement supérieur. Fait à noter, la croissance du nombre d'étudiants inscrits dans les programmes d'études de premier cycle en géographie perdure depuis quelques années. Une tendance à l'augmentation, qui reste toutefois moins prononcée, des étudiants du premier cycle se dessine dans la division des Provinces atlantiques.

Cette tendance s'inverse autant dans la division
page suivante...

undergraduate post-secondary education in geography occurs in the CAGONT Division. Given the large number of post-secondary institutions in Ontario this is not a surprising finding. Noteworthy is the general increase in numbers of undergraduate students in geography courses/programs that is currently underway. This trend is matched, to a lesser degree, by a gradual increase in undergraduate enrolment in the ACAG Division.

Both the PCAG and WDCAG divisions display remarkably divergent trends (Figure 2). Since 2002-2003, the number of undergraduate students enrolled in geography in the PCAG Division has steadily fallen to the point where, in 2008-2009, the total number of students is at the lowest level in the last 20 years. A similar, although delayed trend, is apparently underway in the WDCAG Division, where the number of students enrolled in undergraduate courses/programs has now fallen to levels continued...

des Prairies que dans celle de l'Ouest (figure 2). En fait, depuis 2002-2003, dans la division des Prairies, le nombre d'étudiants inscrits dans les programmes d'études de premier cycle en géographie a baissé de manière constante pour atteindre son plus bas niveau en 20 ans au cours de l'année 2008-2009. La même tendance se confirme, mais avec un décalage, dans la division de l'Ouest où le nombre d'étudiants inscrits dans les programmes d'études de premier cycle en géographie se situe aujourd'hui au même niveau que dans les années 1990. Ces données sont révélatrices d'une tendance lourde de l'évolution négative des étudiants du premier cycle dans ces deux Divisions.

La figure 3 présente l'évolution des taux d'inscription aux programmes de deuxième cycle offerts par les établissements d'enseignement supérieur. Alors que les changements dans le nombre d'étudiants du deuxième cycle sont, toutes proportions gardées, bien

last seen in the early 1990s. There is no indication that the downward trends in undergraduate enrolment in the PCAG and WDCAG divisions are slowing or changing.

Figure 3 presents the trends in enrolment in MA/MSc programs in Canadian post-secondary institutions. While proportionately large changes in master's enrolments appear to be underway in both the ACAG and PCAG divisions, the picture is quite different in both the CAGONT and WDCAG divisions. In the former, the large decline in master's student numbers that characterized most of the 1990s turned around in the early-2000s. Since the 2002-2003 academic year there has been a steady increase in the number of MA/MSc students in departments associated with CAGONT. The plateau reached in 2007-2009 may be signalling the end of this trend. The aberrant Quebec data reflects the sporadic submission of information for inclusion in the directory.

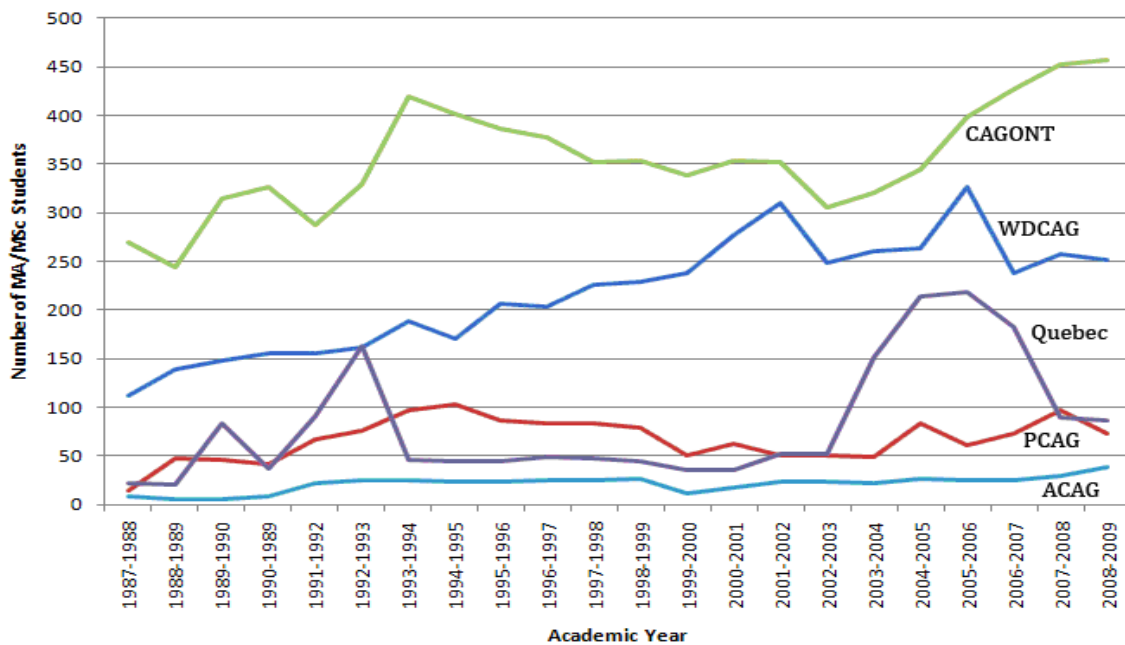


Figure 3. Student enrolment in post-secondary MA/MSc geography programs by CAG Division, 1987 to 2009, as recorded in the Canadian Association of Geographers Directory./

Figure 3 : Évolution des effectifs des programmes d'études de deuxième cycle en géographie par Division de l'ACG, 1987-2009, données recensées dans l'Annuaire de l'Association canadienne des géographes.

engagés dans les divisions des Provinces atlantiques et des Prairies, le tableau des divisions de l'Ontario et de l'Ouest est assez différent. Dans le cas de l'Ontario, la tendance de déclin du nombre d'étudiants de deuxième cycle au cours des années 1990 s'est inversée au début des années 2000. En effet, le nombre d'étudiants de deuxième cycle inscrits dans un établissement rattaché à la division de l'Ontario prend de l'ampleur depuis l'année académique 2002-2003. Cette tendance s'est stabilisée depuis qu'elle a atteint son point culminant entre 2007 et

Figure 3 reveals some interesting details of enrolment in MA/MSc programs east vs. west. Given the number of reporting graduate programs in the CAGONT Division (n=15) vs. those in the Western Division (n=10; with several only having begun in the last few years), it appears that proportionately more masters students reside in programs in the WDCAG. Nonetheless, with the exception of two academic years (2001-2002; 2005-2006), the absolute number of masters students in the WDCAG appears to have remained relatively constant

page suivante...

continued...

2009. Les résultats obtenus pour le Québec sont le résultat des données aléatoires qui ont été communiquées aux fins de la production de l'annuaire.

Quelques éléments intéressants qui distinguent l'est et l'ouest du pays concernant les taux inscriptions aux programmes de deuxième cycle sont exposés dans la figure 3. Compte tenu du nombre plus élevé de départements d'études supérieures de la division de l'Ontario (n=15) qui fournissent leurs données comparativement à ceux de la division de l'Ouest (n=10; la plupart d'entre eux ont commencé récemment à fournir des données), il semble que la proportion la plus forte

since around 2000-2001. This observation suggests that most institutions in the WDCAG maybe at, or close, to their capacity for MA/MSc students.

Figure 4 illustrates the enrolment trends of PhD students registered in geography programs by division. Over the period of record, all of the divisions except CAGONT have maintained relatively consistent overall numbers of PhD students in their departmental programs. Geography departments associated with CAGONT by contrast have steadily increased the number of PhD students - perhaps even at an accelerated pace since 2005-2009.

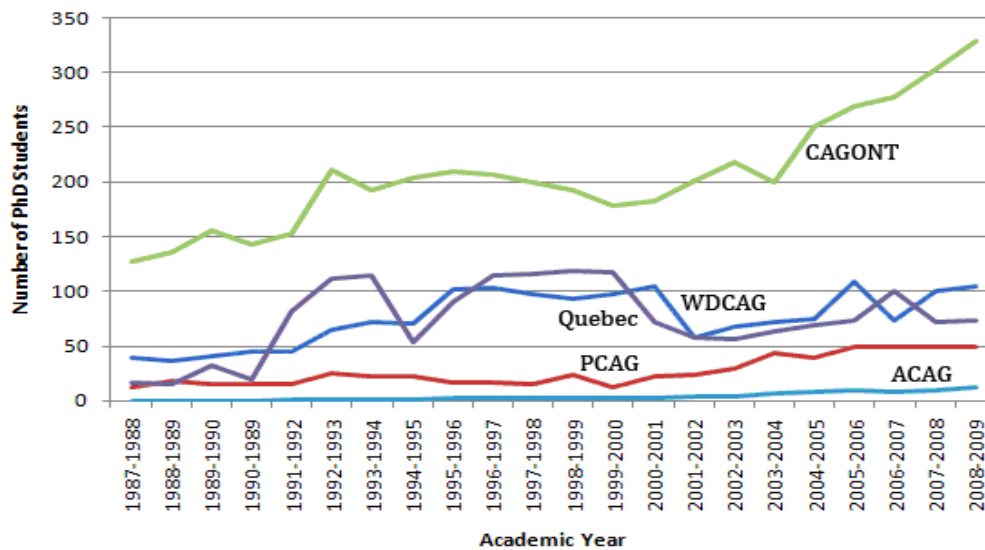


Figure 4. Student enrolment in PhD programs by CAG Division, 1987 to 2009, as recorded in the Canadian Association of Geographers Directory./ Figure 4 : Évolution des effectifs des programmes d'études de troisième cycle en géographie par Division de l'ACG, 1987-2009, données recensées dans l'Annuaire de l'Association canadienne des géographes.

d'étudiants inscrits au deuxième cycle se retrouve dans la division de l'Ouest. Pourtant, mise à part deux années académiques (2001-2002 et 2005-2006), il reste que le nombre absolu d'étudiants du deuxième cycle dans la division de l'Ouest apparaît relativement stable depuis environ l'année 2000-2001. Cela laisse entendre que la majorité des établissements universitaires de la division de l'Ouest connaissent ou connaîtront une saturation du nombre d'effectifs du deuxième cycle.

La figure 4 présente l'évolution des taux d'inscription aux programmes de troisième cycle en géographie. Sur les années pour lesquelles des données sont disponibles, le nombre d'effectifs du troisième cycle est resté relativement stable dans toutes les divisions à

The insights to be gleaned from an assessment of the accumulating perspective offered by over 20 years of program enrolment data are potentially many. At the national level, the general weakening of interest in undergraduate and masters geography courses/programs shown in Figure 1 will be of concern to some. The burgeoning number of PhD candidates also shown in Figure 1 - and driven largely dynamics in the CAGONT Division according to Figure 4 - gives one pause for thought as to what the future may hold for this cadre of PhDs.

The Directory data teases out some interesting trends, but does little to explain the causal factors behind these dynamics. Clearly institutional and provincial

page suivante...

continued...

l'exception de celle de l'Ontario. Un nombre toujours plus élevé d'étudiants poursuivent des études doctorales dans les départements de géographie rattachés à la division de l'Ontario. Le taux de croissance des inscriptions s'accélère même entre 2005 et 2009.

L'évaluation de la perspective qu'offre les données recensées depuis plus de 20 ans sur les taux d'inscriptions aux études supérieures en géographie a permis d'acquérir de nouvelles connaissances. Tel que le montre la figure 1, les programmes d'études de premier et de deuxième cycles suscitent moins d'intérêt en général au niveau national, une situation qui, à bien des égards, pourrait être préoccupante. Comme on peut le constater dans les figures 1 et 4, la hausse fulgurante du nombre de doctorants, dont la progression des inscriptions est plus forte dans la division de l'Ontario, donne matière à réflexion sur l'avenir des titulaires de doctorats.

Les données recensées dans l'Annuaire permettent de dégager des tendances intéressantes qui se distinguent entre les divisions, mais ne disent rien sur les facteurs qui expliquent l'évolution des effectifs. Les politiques adoptées par les universités ou celles des gouvernements provinciaux contribuent à cette dynamique. Malgré tout, le nombre d'étudiants inscrits au premier cycle en géographie dans l'ensemble des divisions à l'exception de celle de l'Ontario est en chute libre. Ce phénomène ne peut laisser personne indifférent au sein de notre discipline. La fermeture et la réduction des programmes d'études en géographie n'expliquent pas tout.

Pour terminer, je garde l'espoir que ce portrait des quelques 20 années de données recensées dans l'Annuaire puisse servir à alimenter les débats sur la situation actuelle et future des programmes d'études supérieures en géographie au Canada. Je tiens à remercier personnellement les rédacteurs de l'Annuaire pour avoir fait preuve de prévoyance et d'un intérêt marqué. Sans eux, cette base de données unique n'aurait jamais pu voir le jour.

Dan Smith, président,
Association canadienne des géographes

Le renouvellement et le paiement *en ligne*
de l'adhésion pour l'année 2010

sont maintenant disponibles.

Pour renouveler votre adhésion,
voir Mon Profil sur notre site Web à
www.cag-acg.ca/fr/online_renewal.html

Vous devez utiliser Windows Explorer.

La période d'adhésion à l'ACG
va du 1er janvier au 31 décembre.

government policies are partially responsible. Even so, the plunging numbers of undergraduate students focused on geography in every division except for CAGONT should be a disciplinary worry. There is something at work here beyond the closure and shrinking of geography programs.

In conclusion, my hope is that this summary of over 20 years of Directory data will spark some discussion about the state and future of post-secondary geography in Canada. It is drawn from a unique set of data that would scarcely exist were it not for the foresight and interest of our Directory Editors. My personal thanks to each and every one of them.

Dan Smith, President,
Canadian Association of Geographers

DIVISION NEWS

Canadian Association of Geographers-Ontario Division (CAGONT) 2010 Annual Meeting October 15-16, 2010 Toronto

The Department of Geography (Faculty of Arts) and the Centre for the Study of Commercial Activity (Ted Rogers School of Management) at Ryerson University invite attendees to the Canadian Association of Geographers - Ontario Division (CAGONT) 2010 Annual Meeting from October 15-16, 2010 in Toronto. The conference theme is: **GEOGRAPHY WORKS!**

We are looking forward to hosting a plenary session/reception on Friday evening and full day of poster and paper presentations, research and scholarship results, and other relevant geographic experiences on Saturday.

CAGONT provides an exceptional opportunity for students to connect with one another, and faculty from other universities. Faculty, graduate students, undergraduate students, and interested others are all welcome! Full details will be available very soon. Please **SAVE THE DATE**.

The conference website is currently being developed and can be found at <http://www.geography.ryerson.ca/CAGONT2010/> (NOTE: MailScanner has detected a possible fraud attempt from "mail.arts.ryerson.ca" claiming to be <http://www.geography.ryerson.ca/CAGONT2010/>)

Wayne Forsythe,
CAGONT 2010 organizing committee



*The CAG newsletter is printed
on 100% recycled paper.*



The Prairie Summit
La sommet des Prairies
Regina 2010
June 1-5



CAG 2010 AGM: <http://prairiesummit.uregina.ca>

Annual meetings of the Canadian Association of Geographers, the Canadian Cartographic Association, the Canadian Geomorphology Research Group and the Canadian Remote Sensing Society

Les congrès annuel de l'Association Canadienne des Géographes, l'Association Canadienne de Cartographie, le Groupe Canadien de Recherché en Géomorphologie et la Société Canadienne de Télédétection

The Department of Geography at the University of Regina invites you to participate in the first joint meeting of the Canadian Association of Geographers (CAG), the Canadian Cartographic Association (CCA), the Canadian Geomorphology Research Group (CGRG) and the Canadian Remote Sensing Society (CRSS). As the first joint meeting of these groups, the 2010 Prairie Summit promises to be a unique and special event. The symposium will provide a forum for sharing current research findings, and new research challenges and directions. We seek contributions presenting novel research in all aspects of cartography, geography, geomorphology, GIS and remote sensing.

Le Département de géographie de l'Université de Regina vous invite à vous joindre à la première rencontre commune de l'Association canadienne des géographes (ACG), de l'Association canadienne de cartographie (ACC), du Groupe canadien de recherche en géomorphologie (GCRG) et de la Société canadienne de télédétection (SCT). Ce Sommet des Prairies 2010 promet donc d'être un événement exceptionnel et la tribune idéale pour partager les derniers résultats de recherche, les nouveaux défis et de nouvelles voies de recherche. Nous recherchons des communications présentant des recherches novatrices dans tous les aspects de la cartographie, la géographie, la géomorphologie, des GIS et de la télédétection.

A very special part of the Prairie Summit will be field trips highlighting the unique human and physical geography of Regina, Moose Jaw, the Qu'Appelle Valley, the Avonlea Badlands, the Cypress Hills and the Great Sand Hills.

Des visites mettant en valeur la géographie humaine et physique exceptionnelle de Regina, Moose Jaw, de la vallée Qu'Appelle, des badlands d'Avonlea, des collines Cypress et des Great Sand Hills constitueront des temps forts du Sommet des Prairies.

See <http://prairiesummit.uregina.ca>

Voir <http://prairiesummit.uregina.ca>

FIFTIETH ANNIVERSARY TRUST FUND

*Established in 1997, this trust was created in order to guarantee funding for the CAG Awards over the long term./
Établi en 1997, ces fonds a été créés afin de garantir support des Prix de l'ACG pendant long terme.*

The CAG wishes to thank the following members:/L'ACG souhaite remercier les membres suivants:

Wesley Andreas
Rowland Atkins
Dawn Bowen
Nancy C. Doubleday
Leonard J. Evenden
John C. Everitt
Roger Hayter
Philip Howarth
Thomas Loghrin
Ian Maclachlan

Bryan H. Massam
Terence G. Mcgee
Robert L. Monahan
Earl Gordon Noah
Glen Norcliffe
Bruce Proudfoot
Maureen Reed
Michael C. Roberts
Catherine Rose
Mark W. Rosenberg

André G. Roy
Joan M Schwartz
Christopher Sharpe
O.F.G. Sitwell
Olav Slaymaker
Stephen Swales
Alex Taylor
John Warkentin
Michael Watson
J. David Wood

student ZONE d étudiant

In last summer's Student Zone column I noted that 2009-2010 was a year in which we wanted to start a conversation about student engagement in CAG. We've just completed a survey of student members that will help with that, as our members have commented on the benefits they see in being members, and in suggestions for future programming.

The survey was conducted from January 26 to February 12 and 429 members from 2009 and 2010 were invited to participate in English or French depending on the preference in their membership profile. We received 174 valid responses, for a 41% response rate, which is quite reasonable for an electronic survey.

How representative were the respondents? We have a few bits of biographical information that permits a comparison between the respondents and the broader membership of CAG.

Regionally, the respondents tracked closely between the overall membership and survey respondents, with the Prairie Region being underrepresented and Western being somewhat over represented.

	% of survey respondents	% membership (2008)
Atlantic	6% (n=10)	6%
Quebec	10% (n=18)	11%
Ontario	50% (n=87)	50%
Prairies	4% (n=8)	15%
Western	24% (n=41)	18%
No answer	6% (n=10)	

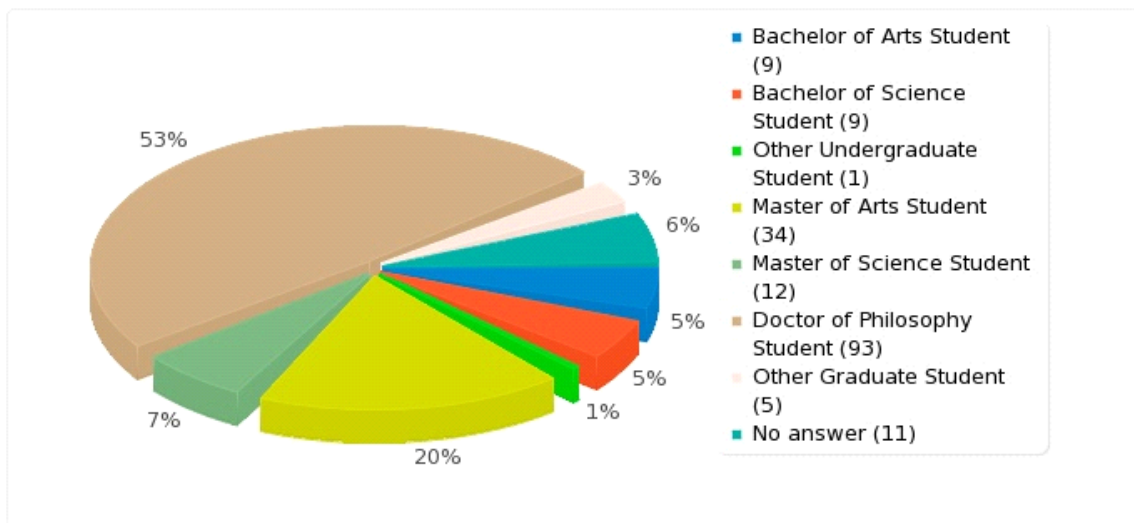
Gender wise, more women than men responded to the survey, which is appropriate since there are more women than men who are student members! The responses are congruent with the gender breakdown of the student membership overall.

	% of survey respondents	% student members reporting gender (2007)
Women	58% (n=101)	57%
Men	40% (n=70)	43%
No answer	2%	

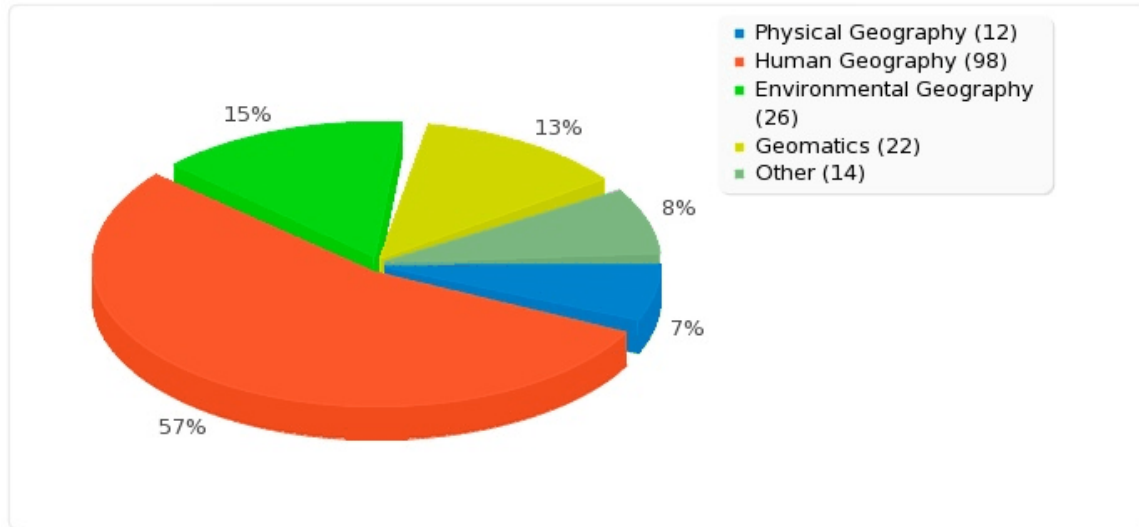
These two measures indicate that the survey responses are reasonably representative of the student member population as a whole.

Some points of interest about the respondents, most student members are graduate students between 25 and 34 years old, and human geography was listed as the most common specialty area.

Here is the breakdown of programs of respondents:



and here are the reported fields of interest:



In these and all the biographical questions the results are diverse which show both opportunities to focus our offerings and areas for expansions, such as among physical geographers and undergraduates.

In terms of the services that members find most beneficial, the top ranked benefits include Student Travel Grants, National meetings and access to The Canadian Geographer/Le Géographe canadien.

Service/Benefit	Number of respondents ranking service among the three most valued	% of respondents ranking service among the three most valued
Student Travel Grants	106	62%
National Meetings	88	52%
The Canadian Geographer	87	50%
CAGlist Mailing List	63	36%
Networking	59	34%
The CAG Newsletter	45	26%
Regional Meetings	41	24%
Study Groups	16	9%

(does not add up to 100% due to multiple responses per respondent)

Student members were also asked about topics of concern, particularly information that they would like to see included in future CAG events. Top answers here included academic publishing, deeper understanding of disciplinary geography and career planning.

Topic	Number ranking topic among three most interesting	% ranking topic among three most interesting
Academic publishing	96	55%
Deeper understanding of geography as a discipline	84	48%
Career planning	75	43%
Geography outside the university/professional geography	71	41%
Success strategies for geography students	56	32%
Developing research skills	79	45%
Developing teaching skills	41	23%

(does not add up to 100% due to multiple responses per respondent)

In addition to these closed-ended questions, respondents were asked to contribute comments on services and benefits, proposed topics for future coverage, and how the Association can serve them better. Some key themes and suggestions included enhancing networking and communication, including better electronic communication,

more exposure to student research, and more resources for members who are recent graduates entering the workforce. I will review these issues, and all of the recommendations from the membership, for a presentation to the CAG Council at the Annual Meeting in June so that CAG can continue to improve its connection with student members. Thanks so much to everyone who participated!

If you have any questions or comments, please feel free to e-mail me at jwall@connect.carleton.ca.
John Wall, CAG Student Councillor

CAG Directory 2010

The CAG Directory for 2009 has been published and mailed and we are now working on the CAG Directory for 2010. We would like to enlist your help in making sure that it contains as complete a listing of all Canadian geographers as possible.

If yours is a multi campus university and you are not listed under the departmental listings please contact your closest geography dept and ask if you could be either incorporated into their main listing, or in a separate departmental listing.

If you are an active retiree, whatever your formal designation might be, you may want to consider having your department include you as well.

If you know of geographers in departments or faculties at other locations please encourage them to do the same.

Each department is responsible for the content of the list they submit. The material is published as submitted and the department is charged accordingly. If you are a member of one of the listed departments and your publications and research activities are not included in your department listing or your listing is incorrect please see the person in your department who is responsible for submitting the material.

All members, regardless of their affiliation or lack of one, are automatically included in the "Membership List" section at the back of the directory. This list contains the information submitted by each member on their membership application form, online or paper copy and on file at the time of publication. It is now possible for members to keep personal information updated by going to www.cag-acg.ca and clicking on the "My Profile" section at the top of the main web page.

Only in the case where your publications and research activities do not appear because your institution chose not to be listed in the directory are you eligible to include them under "Geographers in the Public/Private Sector" section of the CAG Directory and then you should follow the instructions below.

"Geographers in the Public/Private Sector"

The primary listing in the CAG directory identifies people who are in a department of geography as submitted by their department. Recognizing that some members of the association are thus excluded, the executive decided in 1999 that the directory should

include an entry under the heading "other geographers" (now called "Geographers in the Public/Private Sector") to identify, and show the recent research activities of members who aren't in a department of geography. If this applies to you, as a CAG 2010 Member, you are invited to submit your personal entry to Kim Falcigno, the Copy Editor of the CAG Directory.

Your document must be formatted according to the style of the CAG Directory and you may list the following:

1. Name and address (preferably official affiliation)
2. Your email address (see Directory for format)
3. List of your current research (see Directory for format). To conserve space, please list up to only three leading projects.
4. Your recent publications (see Directory for format). To conserve space and save cost, please list publications of current year only (2010). However, you may list the publications of the previous year (2009) if you did not have any item to report for the current year but entries that exceed 1 page will be edited. Deadline for submission: July 21, 2010. Please email your entry directly to: kimfalcigno@shaw.ca

DON'T FORGET TO RENEW

YOUR CAG MEMBERSHIP FOR 2010

Membership period is from January 1 to December 31

CUT CLUTTER, NOT TREES, GO PAPERLESS

Simply go to our website at www.cag-acg.ca and click on "My Profile" (black bar, top upper right hand side) and enter your Membership ID and password to access your profile. Click on modify and scroll to the JOURNALS section. Where it says "Please indicate if you would also like to receive a hard copy" click on NO for one, two or all three publications and click save. Or email your instructions to valerie.shoffey@cag-acg.ca.

Please note that mailing details are sent to the publishers 6-8 weeks before an actual mailing so you may still receive hard copies for 6-8 weeks after the change has been made. To access any of our publications go to www.cag-acg.ca, click on Publications, then the publication of your choice and follow the links.

You may also update your profile (personal information, change of address etc.) as well as renew your CAG membership ONLINE at "My Profile".

OBITUARY

ANGLADE, Georges and Mireille, were killed in the Haitian Earthquake.

Georges was born in Haiti and immigrated to Canada with his wife Mireille in 1969. He was a geographer with a passion for literature who set himself the task of modernizing the oral tradition of the Haitian lodyans and of universalizing its expressions. He received his Ph.D. in geography from the University of Strasbourg and was emeritus professor and chair of the Department of Geography at the Université du Québec à Montréal, where he led the department over the course of a 30-year-long academic career.

He was an adventurous geographer and a high-ranking, outspoken government minister whom many thought would succeed former Haitian president Jean-Bertrand Aristide. His wife Mireille was a vocal feminist, a French teacher and a United Nations diplomat. <http://www.thestar.com/news/world/haiti/article/750630--montreal-couple-found-dead-in-haiti-rubble>

DEAN, William George, Professor Emeritus died on 29 December, 2009. Bill will be best known to University of Toronto geography students, where he taught for over 30 years, and to the numerous participants in the two major atlas projects he led to outstanding success, the Economic Atlas of Ontario (1969) and the Historical Atlas of Canada (3 vols., 1987, 1990, 1993 and the Concise Historical Atlas of Canada, 1998). He was also editor (1960 to 1967) of the Canadian Geographer during its formative years.

After the war he enrolled in the Honours geography programme at the University of Toronto (B.A. Hons., 1949), and then quickly went on to his M.A. (UofT 1950), followed by a Ph.D. (McGill, 1959).

He started his professional career working as a research geographer for the British Columbia Department of Lands (1952 to 1953) but he wanted to be a university teacher and in 1953 became the founding professor of geography at United College (now University of Winnipeg). In 1956 Bill was invited to teach at his alma mater, where he remained until retirement in 1987. Bill was a generous supporter of the department at UofT, where he endowed an Ontario Graduate Scholarship and an award for undergraduate field studies.

GUTSELL, Bernard passed away in Guelph on March 4, 2010 at 96 years of age. He taught cartography in the Department of Geography at York University from 1965 until he retired in 1979.

He moved to Canada in 1948 and joined the Geographical Bureau of the Federal Government. In 1949, he wrote the first book on the geography of

Newfoundland to commemorate its joining Canada. He established the journal, *Cartographica* in 1965. In the same year, he joined the faculty of York University where he was a Fellow of Winters College. He retired in 1979 and moved to Guelph soon after.

McMURRY, John passed away Feb. 5, 2010. He was 89. He was considered one of Wilfrid Laurier University's most celebrated geography professors.

He joined Laurier (then Waterloo Lutheran University) in 1962 as the founding chair of the Department of Geography and Geology and was instrumental in establishing the graduate program in geography in 1965. In 1973, he successfully transitioned the Geography and Geology department at Waterloo Lutheran to establish the Department of Geography at Wilfrid Laurier University.

Dr. McMurry was credited with introducing resource management studies to geography at Laurier, which integrated the study of the physical environment with human activities. He made sustainable development the focus of geographical studies long before it became the buzzword it is today.

Dr. McMurry retired from Laurier in 1986. In September 2009, Wilfrid Laurier University received an anonymous \$2.5-million donation to establish the Dr. John McMurry Research Chair in Environmental Geography. Dr. Scott Slocombe was named the inaugural chairholder.

Among other awards, Dr. McMurry won the Wilfrid Laurier University Teaching Award in 1974.

GeogNews - ONLINE Weekly News Digest of the CAG

You are invited to send your or your colleagues latest "geographical" awards, accomplishments, accolades, news releases, etc. for inclusion in forthcoming issues of GeogNews directly to cag@geog.uvic.ca.

In addition, please consider nominating a worthy geography faculty member, geography staff, or geography student to receive the geographer-of-the-week distinction. If possible please include a webpage link with your nomination.

CAG COMMENTARY SERIES Submissions

Submissions to the CAG Commentary Series (800 words max.) which address an issue of public interest from a geographical perspective are invited, in English or French, and should be sent to the editor at: valerie.shoffey@cag-acg.ca.

Where material that has already appeared in the press is submitted, the author must ensure that permission has been obtained from the original publishers for the CAG to reprint their commentary.

Submission does not guarantee publication.

JOB OPPORTUNITIES IN GEOGRAPHY

CAGLIST Job Postings Webpage can be found at <http://office.geog.uvic.ca/dept/cag/jobs.htm>

SIMON FRASER UNIVERSITY

The Department of Geography at Simon Fraser University invites applications for a tenure track faculty appointment in landscape ecology/biogeography. We seek a scientist with interests in ecological/biogeographical processes and patterns, and modeling such processes and patterns across a range of landscape scales from local to global, including the role of human-environment interactions. Links to other branches of physical geography/earth system science are desirable. The appointment will be at the rank of Assistant Professor and will ideally begin September 1, 2010.

Simon Fraser University (SFU) is a public university in British Columbia, Canada with three campuses in Metro Vancouver. The main campus is located atop Burnaby Mountain, with the other campuses in Vancouver and Surrey. The Department of Geography is part of the newly created Faculty of Environment. For more information about the department or the University please visit www.sfu.ca/geography.

Applicants must have completed a PhD by the time of appointment and should demonstrate a promise of excellence in research and effectiveness in teaching at the undergraduate and graduate levels in a Physical Geography Program. Prime teaching responsibilities will be to instruct undergraduate courses in biogeography and landscape ecology in the undergraduate programs of Physical Geography and Environmental Science (which includes a developing applied biological conservation stream) plus related graduate courses, and to provide research direction and graduate supervision in landscape ecology and biogeography. Ability to instruct in other undergraduate courses in the Physical Geography Program is an asset. The appointee will be responsible for establishing an externally funded research program in landscape ecology/biogeography.

Applications should include a curriculum vitae, a statement of teaching and research interests and career goals, and samples of publications. Please send applications by mail or email to:

Roger Hayter, Appointments Committee Chair
Department of Geography, Simon Fraser University
8888 University Drive, Burnaby, BC, Canada V5A 1S6
or geogappt@sfu.ca

Candidates need to arrange for three confidential letters of reference to be sent to the Committee Chair under separate cover. Review of applications will commence May 1, 2010.

All qualified candidates are encouraged to apply. However, Canadians and permanent residents will be

given priority. Simon Fraser University is committed to employment equity and encourages applications from all qualified women and men, including visible minorities, aboriginal people and, persons with disabilities. Please note that this position is contingent upon available funding and is subject to final approval by the Board of Governors.

Under the authority of the University Act, personal information that is required by the University for academic appointment competition will be collected. For further details see the Collection Notice: http://www.sfu.ca/vpacademic/Faculty_Openings/Collection_Notice.html.

UNIVERSITY OF SASKATCHEWAN

The University of Saskatchewan (U of S) invites applications for a Tier I Canada Research Chair (CRC) in the field of Water Policy. This opportunity is a joint initiative among three new interdisciplinary schools (School of Environment and Sustainability, Johnson-Shoyama Graduate School of Public Policy, and School of Public Health) created at the U of S to foster growth in interdisciplinary and collaborative research and graduate training in areas of strategic importance to the institution.

The Chair will provide leadership to the Schools by developing a prominent research and graduate student training program that addresses some major element(s) of water policy with a focus on freshwater resources, including but not limited to: water policy development or assessment; links of water policy to environmental and human health considerations; policy regarding sustainable water use, including water allocation and trans-boundary issues; links among energy policy/initiatives, climate change and water policy, or agriculture and water policy; policy concerning water valuation and trade; and policy in relation to national and international water governance, incl. multi-level governance structures. The Chair will also play an important role within larger, interdisciplinary water initiatives under development at the U of S.

The ideal candidate will have a PhD or equivalent qualification, be a nationally/internationally recognized scholar with a strong record of attracting competitively awarded research funding, and have experience or interest in developing interdisciplinary research partnerships and approaches. Applications are welcome from strong candidates in all fields related to water policy. The successful candidate will be appointed to a tenured or tenure-track position at the Associate or Full Professor level commensurate with qualifications

within one or more of the three Schools. The Chair will be awarded for a seven-year period and is renewable.

Review of applications will begin immediately and continue until a suitable candidate is found.

For information about the University of Saskatchewan, please visit www.usask.ca. For information about the three Schools, please visit www.usask.ca/sens, www.schoolofpublicpolicy.sk.ca, & www.usask.ca/sph. Questions related to this CRC opportunity should be directed to Dr. Karsten Liber at karsten.liber@usask.ca.

The University of Saskatchewan is committed to employment equity, welcomes diversity in the workplace, and encourages applications from all qualified individuals, including women, members of visible minorities, Aboriginal persons, and persons with disabilities. All qualified candidates are encouraged to apply.

To be considered for this opportunity, please send your CV, a letter of introduction, the names of three referees, and a summary of your proposed research program and graduate training philosophy, in confidence, to: Dr. Karsten Liber, Acting Director
School of Environment and Sustainability
University of Saskatchewan
Room 230, Law Building, 15 Campus Drive
Saskatoon, SK, Canada S7N 5A6
Fax: (306) 966-5900
E-mail: karsten.liber@usask.ca

UNIVERSITY OF SASKATCHEWAN

The School of Environment and Sustainability at the University of Saskatchewan invites applications for a Tier 2 Canada Research Chair (CRC) in Environmental or Sustainability Science. The school conducts interdisciplinary research and focuses on graduate student education. Our vision is to create and integrate multiple understandings of natural and human environments, and to be internationally known for innovative, provocative and wide-ranging approaches to environmental sustainability.

Allocated to support the new School of Environment and Sustainability, the CRC in Environmental or Sustainability Science will provide leadership to the school by developing a prominent and rigorous research and graduate student training programme that addresses some major element(s) of environmental and/or sustainability science. Examples of strategic science issues for which the school wishes to be known include, but are not limited to: climate change, water security, alternative energy, and ecosystems science, including biodiversity. The CRC will also play an important role in shaping the directions and initiatives of the new school, and will ideally connect their research in an interdisciplinary fashion with that of other scholars within and beyond the school.

The ideal candidate will have a PhD (obtained within the last ten years), be a nationally or internationally recognized scholar with a strong record of attracting competitively awarded research funding, including funding from the Natural Sciences and Engineering Research Council of Canada (NSERC) or a similar national granting agency, and have experience or an interest in developing interdisciplinary research partnerships and approaches involving graduate students. Applications are welcome from strong candidates in environmental and/or sustainability science in all fields eligible for funding through NSERC (www.nserc-crsng.gc.ca). Canada Research Chairs are awarded by the CRC Secretariat in Ottawa after a rigorous evaluation (www.chairs-chaires.gc.ca). The candidate who is successful in both institutional nomination and CRC Secretariat evaluation will be appointed to a tenured or tenure-track position at an assistant or associate professor level commensurate with qualifications. The CRC will be awarded for a five-year period, renewable once. The position is available on July 1, 2010. Review of applications will begin on December 7, 2009, and continue until a suitable candidate is found.

For information about the University of Saskatchewan, please visit www.usask.ca. For information about the School of Environment and Sustainability, please visit www.usask.ca/sens.

To be considered for this opportunity, please send your complete CV, a letter of introduction, a summary of your proposed research program and graduate mentoring philosophy, and the names of three referees, in confidence, to: Dr. Karsten Liber, Executive Director
School of Environment and Sustainability
University of Saskatchewan
Saskatoon, SK Canada S7N 5C8
E-mail: karsten.liber@usask.ca

The University of Saskatchewan is committed to employment equity, welcomes diversity in the workplace, and encourages applications from all qualified individuals, including women, members of visible minorities, Aboriginal persons, and persons with disabilities. All qualified candidates are encouraged to apply.

UNIVERSITY OF WATERLOO

The University of Waterloo (UW) invites nominations and expressions of interest for the position of Dean of the Faculty of Environment. The successful candidate comes into the faculty at an exciting and opportune time. Strongly focused on interdisciplinary research, and a catalyst for collaborative and community-based approaches to sustainability, the Faculty of Environment is the fastest growing of UW's six faculties.

The University of Waterloo's ambition is to pursue global excellence and to seize opportunities for

Canada. For 18 consecutive years, UW has been named Canada's most innovative university in the Maclean's annual university rankings. Outward-looking, research-intensive, and situated in the heart of Canada's Technology Triangle, UW is known for its entrepreneurial spirit, and is a leader in technology transfer. As one of the first faculties of environment in Canada, the UW Faculty of Environment has recently undergone a period of great renewal and growth. Committed to providing smart green solutions by bringing together diverse research areas, the faculty brings a strong integrative and interdisciplinary focus to its work. With productive and creative partnerships both within the University of Waterloo, and more broadly with other universities and the community, the Faculty of Environment is seen as a leader across the country, and is at the forefront of teaching and research. For more information, please see <http://www.env.uwaterloo.ca/>

The University of Waterloo is seeking a dynamic and visionary Dean, with the skills both to consolidate the tremendous growth and expansion that the faculty has enjoyed, and to take it to the next level of excellence. The new Dean will be a collaborative and consultative leader, and an outstanding administrator. He/she will bring credentials as an educator and researcher consistent with appointment to a tenured position as a full professor. The Dean will work with students, staff and faculty members to continue to build the Faculty's profile internally and externally, and to develop strategies for fundraising, research, and graduate and undergraduate recruitment. The initial five-year appointment will begin in the summer of 2010, or as soon as possible thereafter.

The University respects, appreciates and encourages diversity. Applications from all qualified individuals, including women, members of visible minorities, Aboriginal peoples and persons with disabilities are encouraged; however, priority will be given to Canadians and permanent residents within the global community.

The nominating committee will begin its review of candidates in May 2010. To ensure consideration, documentation should be submitted, in confidence, by late April, to the UW Dean of Environment Nominating Committee at the address shown below.

Janet Wright & Associates Inc.
174 Bedford Road, Toronto, Ontario M5R 2K9
uwenvt@jwasearch.com

Applications should be accompanied by a current curriculum vitae, a brief statement of interest, and the names of three referees.

WILFRID LAURIER UNIVERSITY

The Department of Geography and Environmental Studies, Wilfrid Laurier University is seeking applicants to nominate for a Tier 2 Canada Research Chair in Boreal Water Resources and Ecosystem

Science at the Assistant or Associate Professor level. The new Chair will help integrate and focus research programmes in the faculties of Arts and Science on the common theme of water resources in changing boreal ecosystems. Assumption of duties will be a function of timing of the successful nomination decision by Laurier and the decision making process of the Canada Research Chair programme. Earliest placement would be January 2011.

Wilfrid Laurier is a medium sized university in southern Ontario, Canada, with an established research-orientation toward the water sciences. Wilfrid Laurier is home to the Cold Regions Research Centre and the Institute for Water Science, which together have consolidated an integrated water research programme focussed on the boreal eco-region, a complex mosaic of forest and peatlands that occupies 35% of Canada's landmass. The new Chair will develop a research programme that will contribute to the scientific knowledge base needed for informed and sustainable management of water resources in boreal ecosystems. Preference will be given to applicants who can demonstrate that their research will lead to the development of novel methods of monitoring, understanding and predicting hydro-ecological, geochemical or geomorphological changes to the landscape as it undergoes modification due to warming soils, longer growing seasons and permafrost thaw.

The successful candidate must have a PhD in hydrology, physical geography or earth and environmental sciences. We are particularly interested in an individual with a strong background or research experience in geomorphology or physical hydrology and who undertakes field research in snow, ice and/or frozen ground hydrological processes. The candidate is expected to develop a well funded, externally recognized, research programme. The successful applicant should have a strong commitment to graduate teaching and supervision.

Following internal selection processes, nominees will be selected to apply to the competitive Canada Research Chair process. Tier II CRC nominees must be emerging scholars with the necessary qualifications, including PhD within the last ten years, to be hired at the assistant or associate professor level. Tier II CRCs are tenable for five years and are renewable once. For more information on the Canada Research Chairs program, please see (<http://www.chairs-chaires.gc.ca/>).

Applicants should send a cover letter outlining their research interests, a copy of their curriculum vitae, a brief teaching dossier including a statement of teaching philosophy (max. 2 pp.) and evidence of teaching effectiveness. These materials may be sent as hard copy or as a pdf file. Electronic copies of no more than three published reprints or works in progress may also be sent to Dr. Michael English, Chair of the Search Committee by the closing date of 30 April 2010. Candidates are required

to ensure that three referees send letters of recommendation to the Search Committee Chair by the closing date. Evaluation of files will begin on their receipt.

Wilfrid Laurier University is committed to equity and values diversity. We welcome applications from qualified women and men, including persons of all genders and sexual orientations, persons with disabilities, Aboriginal persons, and persons of a visible minority. Applicants from these designated groups may self-identify, in confidence, to the Dean of the Faculty of Arts at Wilfrid Laurier University. All qualified candidates are encouraged to apply; however Canadian and permanent residents will be given priority.

UNIVERSITY OF WINNIPEG

The Department of Geography at the University of Winnipeg invites applications for a tenure-track position in Applied Remote Sensing at the rank of Assistant Professor. The successful candidate will have a research program in which remote sensing and related techniques, including GIS, are used to study urban issues such as planning and housing, neighborhood identity and development, sustainable transportation, and the urban environment. The appointee will contribute to teaching and supervision at the undergraduate level and, in addition to teaching remote sensing and related courses, will be able to teach introductory-level courses in human and/or physical geography.

The Department of Geography has state-of-the-art facilities for the delivery of remote sensing, GIS, and related courses, as well as a remote sensing research laboratory equipped with a variety of instruments (<http://psf.uwinnipeg.ca>). It offers a joint degree/diploma program in Geography/GIS with the city's Red River College. The department also has a strong connection to the university's Institute of Urban Studies, as well as the Environmental Studies program, in which there is a stream dedicated to urban issues.

Applicants must hold a PhD in geography, or a closely related discipline, or be nearing completion, and demonstrate a clear promise of excellence in research and teaching. The position is subject to budgetary approval. The preferred starting date is August 1, 2010, but is negotiable. The closing date for the application is May 3, 2010.

Applications, including curriculum vitae, a statement of research objectives and teaching interests, and the names of three referees, should be sent to:

Dr. Danny Blair, Chair, Department of Geography,
The University of Winnipeg, 515 Portage Avenue,
Winnipeg, MB, Canada, R3B 2E9.

The University of Winnipeg is committed to employment equity, welcomes diversity in the workplace, and encourages applications from all qualified individuals including women, members of visible minorities,

aboriginal persons and persons with disabilities. In accordance with Canadian immigration requirements, this advertisement is initially directed to Canadian citizens and permanent residents of Canada.

CAREER DEVELOPMENT WEBSITE

Located at www.cchrei.ca/ee *EnviroEmployment* features sixty environmental occupations, which allow users to explore job descriptions, education and skill requirements and working conditions of some of Canada's hottest environmental careers. The site is designed for experienced workers currently employed in the environment sector, experienced workers in other industries who have the transferable skills for the environment industry, and newcomers to Canada who have the credentials for a mid-career position within this industry. Guided through four career development steps: Self-Assessment, Career & Industry Research, Job Preparation and Professional Development, users can access the entire website free of charge.

Other websites:

John's Jobs for Geographers is a list of sites compiled to give geography students a head-start in the world of online job searches:

<http://www.geog.uvic.ca/dept2/faculty/newcomb/jji.shtml>

Geography Jobs is free to search and free to post announcements on. See www.geogjobs.com/

About.com has over a page of annotated links to geography career websites:

<http://geography.about.com/od/careersingeography/a/jobsgeography.htm>

"Job Opportunities in Geography" must be submitted to the editor at cag@geog.mcgill.ca (No formatting) by the deadlines listed on the back page of this newsletter. Inclusion is subject to availability of space. There is no charge to universities for this service.

CAGLIST Job Postings Webpage - To list your job on the webpage of the "CAGLIST Job Postings" send your copy directly to Dan Smith at smith@uvic.ca.

CAGLIST Job Postings - For a complete listings go to <http://office.geog.uvic.ca/dept/cag/jobs.htm>

Geography Jobs site is free to search and free to post announcements on. See www.geogjobs.com/

Newsletter of The Canadian Association of Geographers

Publication Schedule/l'Horaire de publication

The CAG Newsletter is published four times per year./Le bulletin de l'ACG est publié quatre fois par année.

<i>Number/ Numéro</i>	<i>Date of Publication/ Date de publication</i>	<i>Submission Deadline/ Date de soumission</i>
Issue 1 spring/printemps	01 April/avril	15 March/mars
Issue 2 summer/été	01 July/juillet	15 June/juin
Issue 3 fall/automne	01 Oct/octobre	15 Sept/septembre
Issue 4 winter/hiver	01 Jan/janvier	15 Dec/décembre

Canada Post Agreement No. 40032401
No de la convention-Postes Canada 40032401

The CAG Newsletter is published **four** times per year
by *The Canadian Association of Geographers*

www.cag-acg.ca

Department of Geography, McGill University
805 Sherbrooke St. W, Suite 425
Montreal, QC H3A 2K6
tel: (514)398-4946 / fax: (514)398-7437
email: valerie.shoffey@cag-acg.ca

Le Bulletin de l'ACG est publié **quatre** fois par année
par *l'Association Canadienne des Géographes*

www.cag-acg.ca

Département de géographie, l'Université McGill
805, rue Sherbrooke O, Suite 425
Montréal (QC)H3A 2K6
tél: (514) 398-4946 / télécopieur: (514) 398-7437
courriel: valerie.shoffey@cag-acg.ca

CAG COMMENTARY SERIES Submissions

Submissions to the CAG Commentary Series (800 words max.) which address an issue of public interest from a geographical perspective are invited, in English or French, and should be sent to the editor at: cag@geog.mcgill.ca. Where material that has already appeared in the press is submitted, the author must ensure that permission has been obtained from the original publishers for the CAG to reprint their commentary. Submission does not guarantee publication.

“JOB OPPORTUNITIES IN GEOGRAPHY”

To list job opportunities in the newsletter your copy must be submitted electronically and according to the deadlines listed above (**NO formatting**) to the editor at cag@geog.mcgill.ca. There is no charge to universities for this service, however inclusion is subject to availability of space. To list your job on the “CAGLIST Job Postings” webpage send your copy directly to Dan Smith at smith@uvic.ca.

CHANGE OF ADDRESS

To change your address and/or other coordinates login to the “My Profile” section of our website at www.cag-acg.ca or send your changes to valerie.shoffey@cag-acg.ca.

Le bulletin de l'association canadienne des géographes